

APRIL 2024 - MARCH 2025

Fly the Kimberley

DISCOVER | FLY | EXPERIENCE



AIR KIMBERLEY

Flying Australia's Northwest

airkimberley.com.au





Anywhere in the Kimberley

We'll fly you there.

"Fly with us on a journey of discovery exploring ancient cultures, beautiful landscapes, and stunning natural attractions. Flying to some of the most unique awe-inspiring remote wilderness locations in Australia, our passion is to connect people to the Kimberley and share the world's oldest living culture through unforgettable guest experiences."



airkimberley.com.au

Our Destinations

TOUR MAP LEGEND

- Points of Interest
- ★ Stopover
- Major Towns
- Overnight Tour
- ✈ Includes plane flight
- 🚁 Includes helicopter
- 🚗 Includes 4WD
- 🚌 Includes tour bus
- 🚤 Includes boat ride
- 🧑 Includes guide/hiking
- 🐋 Migratory whale path

FLIGHT PATHS AND TOURS

- KL1 Buccaneer Explorer ✈
- KL2D* Windjana Explorer ✈ 🚌 🧑
- KL2O* Kimberley Adventure Safari ✈ 🚌 🧑 🚤 🏠
- KL4D Bungle Bungle Explorer ✈ 🚌 🧑
- KL4O Bungle Bungle Adventure Safari ✈ 🚌 🧑 🚤 🏠
- KL5 Sunday Island Explorer ✈ 🚤
- KL6D Cygnet Bay Explorer ✈ 🚤 🚗
- KL6O Cygnet Bay Adventure Safari ✈ 🧑 🚤 🏠
- KL8D Mitchell Falls Explorer - Dry Season ✈ 🧑 🚗 🚤
- KL8W Mitchell Falls Explorer - Wet Season ✈ 🚗
- KL9 Broome & Beaches ✈
- CYGS Irresistible Islands Scenic ✈

*Tour returning in 2025.





WELCOME TO
AIR KIMBERLEY

Your Kimberley Adventure awaits.



Air Kimberley has over 30-years of experience, is committed to providing outstanding customer service and highly values its relationships with guests. In 2022, Air Kimberley was awarded Broome's Best Tourism Business for a third year running in addition to Broome Business of the Year in 2021. In 2023, Air Kimberley was inducted into the Broome Business Excellence Hall of Fame for winning the Tourism Excellence Award for three consecutive years.

A finalist at the Western Australian Tourism Awards in 2021, Air Kimberley was also recently awarded 2023 TripAdvisor Travelers Choice for the fourth consecutive year following on from a Certificate of Excellence Hall of Fame Award in 2019. Our commitment is to provide the best guest experience, unforgettable adventures and to exceed expectations while providing, through our operations...

Safety | Excellence | Knowledge



Bonus!

Every passenger receives an Air Kimberley tour photo to share with family and friends, a souvenir Passport to the Kimberley tour map, stubby cooler and complimentary Matso's Brewery beer voucher.





Our fleet

Our aircraft seat up to 13 passengers and are perfectly suited to flying conditions in Australia's Northwest.



C208
GRAND
CARAVAN



PIPER
NAVAJO
CHIEFTAIN



GA8
AIRVAN



CESSNA
210



CESSNA
206



CESSNA
182

Air Kimberley operates a diverse fleet of well-maintained aircraft including the Cessna 208 Grand Caravan, Piper Navajo Chieftain, GippsAero GA8 Airvan, Cessna 210, 206, and 182. Seating up to 13 passengers, our fleet provides the flexibility and reliability to provide efficient on-time charter and scenic services to remote destinations throughout Australia's Northwest. Combined with safety and comfort, every flight with Air Kimberley is an exceptional guest experience.

*Providing safe and reliable air services to Australia's Northwest...
Welcome to Air Kimberley!*



Air Kimberley first took to the Kimberley skies back in 1992 as King Leopold Air, a small charter company based on a pastoral station close to its namesake – the spectacular King Leopold Ranges. With the renaming of the King Leopold Ranges in 2020 to the Wunaamin Miliwundi Ranges, the name no longer reflected the values of the business and Air Kimberley was born.

The Air Kimberley Difference

- High-wing aircraft with wide passenger windows for better viewing.
- Air, Land and Sea Adventure Tours, Cultural Indigenous Experiences.
- Exceptional guest services, complimentary transfers and personalised gifts.
- Personalised in-flight commentary with comprehensive and informative insights.
- Professional pilots specifically trained for Kimberley conditions.

 **CULTURAL
EXPERIENCE**


Half Day Tour

Horizontal Falls

Horizontal Falls | Buccaneer Archipelago | Cape Leveque | Ardyaloon Hatchery

Flyover the breathtaking natural wonder that is Horizontal Falls

Buccaneer Explorer

KL1 ✈️ 🚗

\$800 (minimum 4 pax)

Concession \$770 | Child \$700 | Family (2A & 2C) \$2,900

AVAILABLE: All year round

DURATION: Half Day Tour (approx. 6.5 hours) | Flight Time 3 hours

WHAT TO BRING: Swimwear, Towel, Sun smart items



Cape Leveque



Ardyaloon Hatchery



Buccaneer Archipelago

Horizontal Falls | Buccaneer Archipelago | Cockatoo Island | Ardyaloon Hatchery | Cape Leveque | Dampier Peninsula

Buccaneer Explorer Highlights

- Departing Broome we track across the Dampier Peninsula and overhead King Sound, home to Australia's largest tides and amongst the highest in the world.
- Overfly the Horizontal Waterfalls described by Sir David Attenborough as **'the 8th Natural Wonder of the World.'**
- Fly across the stunning Buccaneer Archipelago, home to 1,000 islands made of Precambrian sandstone over 2 billion years old.
- Fly overhead Koolan and Cockatoo Island, home to the world's richest iron ore deposits.
- Landing at the Ardyaloon (One Arm Point) community, enjoy a refreshing swim at the beautiful Jologo Beach.
- Visit the Ardyaloon Trochus Hatchery and Aquaculture Centre for lunch and a guided tour with an experienced local guide. Enjoy a fascinating and educational tour of the Hatchery which contains a diverse range of fish, coral, and crustacean species whilst learning about the Bardi-Jawi people's strong connection to their saltwater traditions and get up close and personal with some of the fish and coral species most prevalent in the area.
- Coastal return flight overhead the stunning red cliffs at Cape Leveque, then southbound along the beautiful bays and beaches of the Dampier Peninsula with views of Beagle Bay, James Price Point, Willie Creek Pearl Farm and Broome's world-famous Cable Beach.



*The Horizontal Waterfalls is a natural phenomenon which is tide dependent with variable flow. Whilst we do our very best to arrive at a time of optimum flow, we cannot guarantee the amount or level of water flowing through the Horizontal Waterfalls at any given time. Tour may be subject to itinerary amendments between the months of December – March due to wet season weather.

Full Day Tour

Giant Tides

Whirlpools & Shimmering Pearls

Cygnnet Bay Explorer

KL6D



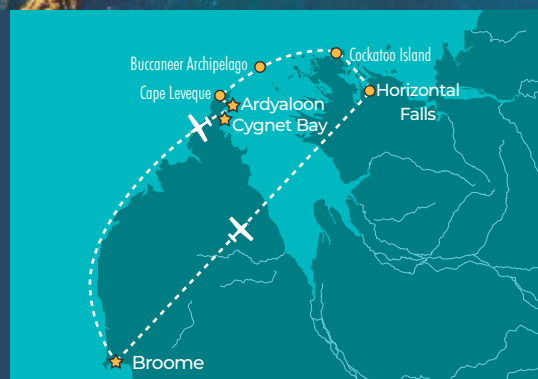
\$1,095 (minimum 4 pax)

Concession \$1,065 | Child \$995 | Family (2A & 2C) \$4,080

AVAILABLE: All year round

DURATION: Full Day Tour (approx. 11 hours) | Flight Time 3 hours

WHAT TO BRING: Swimwear, Towel, Sun smart items.



Shimmering Pearls



Ardyaloon Hatchery



Island Explorer

Horizontal Falls | Buccaneer Archipelago | Ardyaloon Hatchery | Cygnnet Bay Pearl Farm | Cape Leveque

Cygnnet Bay Explorer Highlights

- Overfly the Horizontal Waterfalls described by Sir David Attenborough as **'the 8th Natural Wonder of the World.'**
- Fly across the stunning Buccaneer Archipelago, home to 1,000 islands made of Precambrian sandstone over 2 billion years old.
- Fly overhead Koolan and Cockatoo Island, home to the world's richest iron ore deposits.
- Visit the Ardyaloon Trochus Hatchery and Aquaculture Centre for morning tea and a guided tour with an experienced local guide. Enjoy a fascinating, educational tour of the Hatchery which contains a diverse range of fish, coral, and crustacean species whilst learning about the Bardi-Jawi people's strong connection to their saltwater traditions and get up close and personal with the fish and coral species most prevalent in the area.
- After a very short flight across to Cygnnet Bay Pearl Farm, explore the 'Giant Tides' of the spectacular Kimberley Coast by boat. Feel the power of the world's largest tropical tides as you cruise amongst the giant whirlpools and standing tidal waves on your sea safari.
- Enjoy a Pearl Farm Discovery Tour giving you an insight into the fascinating history of pearling at Cygnnet Bay, learn about the cultivation of some of the most sought-after and beautiful pearls in the world.
- Enjoy a delicious lunch and refreshing swim at Cygnnet Bay Pearl Farms on-site restaurant and swimming pool.
- Coastal return flight overhead the stunning red cliffs at Cape Leveque, then southbound along the beautiful bays and beaches of the Dampier Peninsula with views of Beagle Bay, James Price Point, Willie Creek Pearl Farm and Broome's world-famous Cable Beach.



**CULTURAL
EXPERIENCE**

Full Day Tour

Secluded Bays

A Cultural adventure exploring Bardi Jawi country

Retrace an ancient saltwater journey on an island hopping adventure

Sunday Island Explorer

KL5



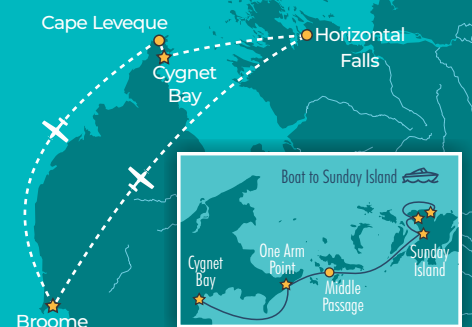
\$1,180

Concession \$1,150 | Child \$1,080 | Family (2A & 2C) \$4,420

AVAILABLE: May - September

DURATION: Full Day Tour (approx. 11 hours) | Flight Time 3 hours

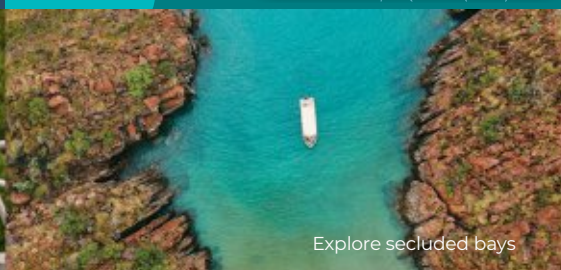
WHAT TO BRING: Swimwear, Towel, Sun smart items



Visit Sunday Island



Your Bardi Jawi Guide



Explore secluded bays

Cultural Tour | Borrgoron | Ardyaloon | Pearl Passage | Sunday Island Goodngarngoon | Oolin Beach | Cygnet Bay Pearl Farm | Horizontal Falls

- Departing Broome, we fly North East over the Dampier Peninsula and King Sound up to the Horizontal Falls where we spend time overflying the spectacular natural phenomenon.
- Tracking across the Buccaneer Archipelago, Sunday Island and Pearl Passage, we land at Cygnet Bay Pearl Farm where you are transferred from the airstrip to meet your Jawi guide Rosanna Angus for a cultural adventure island hopping by boat. Explore tranquil unspoilt locations whilst learning about the cultural and environmental significance of the spectacular marine reserve.
- Experience the Journey of the Tide Drifters as you retrace the ocean journey from Bardi Country on the mainland through the network of islands and tidal passages that make up Jawi Country.
- The cultural saltwater adventure includes a brief visit to beautiful Middle Beach, learning about the story behind the establishment of Ardyaloon and its connection to Sunday Island. Navigating Pearl Passage, experience the turbulent waters of this narrow pass between Jooloom and Jayirri islands and discover its cultural significance.
- Arriving at Ewuny (Sunday Island), learn about the Sunday Island Mission, home to many Jawi and Bardi people until its closure in 1962.
- Visit Goodngarngoon, place of running water, a place of great cultural importance to the Bardi Jawi people. Followed by a visit to Oolin Beach, which holds important cultural and dreamtime stories for Morning Tea, swim and relax on a stunning secluded beach.
- The return journey takes you through some of Australia's most untouched wilderness, abundant with wildlife, search for dugongs, manta rays, sea turtles, hammerhead and tiger sharks as well as countless migratory birds and territorial birds of prey.
- On returning to Cygnet Bay Pearl Farm, enjoy lunch at their on-site restaurant followed by a Pearl Farm Discovery Tour learning about the history of Cygnet Bay and how they culture some of the finest pearls in the world.
- After a return to the airstrip, we depart overhead Cape Leveque for a stunning low level coastal flight back to Broome exploring the many beautiful bays and beaches of the Dampier Peninsula.



CYGNET BAY
PEARL FARM



Due to the scheduled tour times with Oolin Sunday Island Cultural Tours and Cygnet Bay Pearl Farm, we cannot guarantee the amount or level of water flowing through the Horizontal Falls at our chosen time of arrival.



**CULTURAL
EXPERIENCE**

Full Day Tour

Mitchell Falls

Little Mertens Falls | Mertens Gorge | Gwion Gwion Rock Paintings

Experience the power and majesty of the spectacular tiered waterfalls

Mitchell Falls Explorer

KL8D ✈️ 🚗 🚶 🚁

\$2,050 (minimum 4 pax)

Concession \$2,020 | Child \$1,950 | Family (2A & 2C) \$7,900

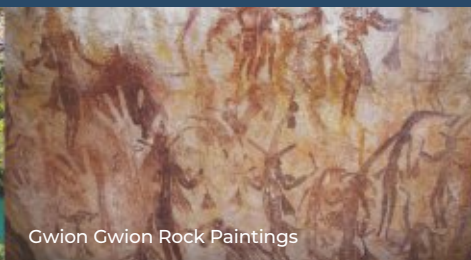
AVAILABLE: May to August (Dry Season Only)

DURATION: Full Day Tour (approx. 12 hours) | Flight Time 5.6 hours

WHAT TO BRING: Swimwear, Towel, Sun smart items, Hiking Shoes



Little Mertens Falls



Gwion Gwion Rock Paintings



Lily Pond

Dampier Peninsula | Prince Regent NP | Mitchell Plateau | Mitchell Falls | Kuri Bay | Horizontal Falls | Cape Leveque

Mitchell Falls Explorer Highlights

Mitchell Falls Explorer KL8W (Wet Season)

Due to seasonal changes and the closure of Mitchell River National Park, we offer an amended itinerary between the months of Sep to Apr.

PRICE \$1,400pp,

Concession \$1,370,

Child \$1,300

Family (2A & 2C) \$4,980

- Departing Broome, we track North across King Sound, home to Australia's largest tides, fly over Walcott Inlet, the rarely seen Harding Range, and the Prince Regent River, before landing at Mitchell Plateau airstrip.
- On arrival, you will be met by your tour guide from Kingfisher Tours. After a quick meet and greet, experience driving along one of the most remote Kimberley tracks in your comfortably airconditioned 4WD through the vast ancient Livistona Palm Forest to the Mertens campground (Ranger Base) and the start of the 4.5km Punamii-unpuu Hiking Trail.
- Guided by your tour guide, enjoy a 4km cultural walk travelling past majestic waterfalls, spell-binding gorges, Aboriginal rock art and sites of cultural significance to the Wunambal people with swimming opportunities.
- Admire the unforgettable view of Mitchell Falls whilst you enjoy a packed lunch, rest, and rejuvenate.
- After exploring the falls, a refreshing swim and many photo opportunities, enjoy an exhilarating helicopter scenic flight with HeliSpirit over the majestic Mitchell Falls and Mertens Gorge and be transferred back to the Ranger Base for the drive back to Mitchell Plateau airstrip.
- After arriving back at the airfield, enjoy some well-earned refreshments before the homeward flight.
- On the homeward flight, we track the coastline past Kuri Bay, home to the Paspaley Pearl Farm and the beautiful Montgomery Reef.
- Fly over Horizontal Waterfalls described by Sir David Attenborough as the 8th Natural Wonder of the World.
- Marvel at the stunning Buccaneer Archipelago and its 1,000 islands and the stunning northern tip of the Dampier Peninsula, Cape Leveque.
- Coastal return flight along the bays and beaches of the Dampier Peninsula with views of Beagle Bay, James Price Point, Willie Creek Pearl Farm and world-famous Cable Beach as the sun sets over the Indian Ocean. Morning Tea, Lunch & refreshments provided.

*The 4km walk from Punamii-unpuu camp site to the Mitchell Falls will be the highlight of your stay, we allow 2-hours to complete the hike. The terrain on this walking trail can be difficult and requires a high level of fitness. Care should be taken due to uneven surfaces, water crossings, cliffs and gorges. The Horizontal Waterfalls is a natural phenomenon which is tide dependant with variable flow. We cannot guarantee the amount or level of water flowing through the Horizontal Waterfalls at any given time.

Full Day Tour

Bungle Bungle Explorer

Halls Creek | Purnululu | Dome Walk | Cathedral Gorge

Be dwarfed by the towering walls of Cathedral Gorge

Bungle Bungle Explorer

KL4D ✈️ 🚐 🚶

\$1,940 (minimum 4 pax)

Concession \$1,910 | Child \$1,840 | Family (2A & 2C) \$7,460

AVAILABLE: May to September

DURATION: Full Day Tour (approx. 11 hours) | Flight Time 5.5 hours

WHAT TO BRING: Comfortable walking shoes, Sun smart items



Flight over the Bungle Bungle Massif

Bushtucker Loop

Walk amongst the beehive domes



Fitzroy River | Geikie Gorge | Halls Creek | Bungle Bungles | Cathedral Gorge | Windjana Gorge | Roebuck Bay

Bungle Bungle Explorer Highlights

- Departing Broome, we track east over the beautiful turquoise waters of Roebuck Bay. Overfly the mighty Fitzroy River, the Fitzroy Crossing township, and the stunning Geikie Gorge.
- Enjoy morning tea and a refreshment stop at Halls Creek in the East Kimberley.
- Fly the scenic pattern around the Bungle Bungle Massif marveling at the spectacular domes from above. Sweeping across the Bungle Bungle range, a hidden world of gorges and pools is revealed with fan palms clinging precariously to walls and crevices in the rocks.
- On arrival at the remote Bellburn airstrip you will be met by your tour guide from Kingfisher Tours. You will then embark on your Bungle Bungle adventure to the southern Dome walk in an air-conditioned 4WD with stops along the way for spectacular photo opportunities.
- Enjoy a moderate 3km guided walk amongst the famous eroded towers and black and orange banded beehive structures on the dome walk and into Cathedral Gorge. This short uneven loop takes you up close among the beehive domes, where you can clearly see the different layers of the sediment and the protective banding of the iron oxide and cyanobacteria.
- Follow a meandering creek bed amongst the towering beehive domes and honeycomb rocks to the iconic natural amphitheater, known as Cathedral Gorge. The Gorge is known for its outstanding acoustics and sheer beauty. There are some steep steps and a ladder within the gorge that lead to narrow ledges.
- A light pack is provided with your drinks and lunch to be enjoyed in Cathedral Gorge.
- On your return to the airstrip, there is time for refreshments before the scenic flight back to Broome.
- On your return flight to Broome, fly over the spectacular Wunaamin-Milliwundi Ranges, Devonian Reef Conservation Park and Windjana Gorge.

KINGFISHER TOURS
sustainable tourism

*A reasonable level of fitness and sturdy footwear is required. There are some areas of uneven ground as well as walking on sand in Cathedral Gorge.

Broome and Beaches

James Price Point | Cable Beach | Town Beach | Willie Creek
Roebuck Bay | Gantheaume Point

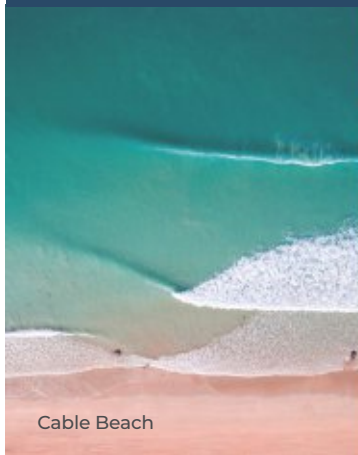
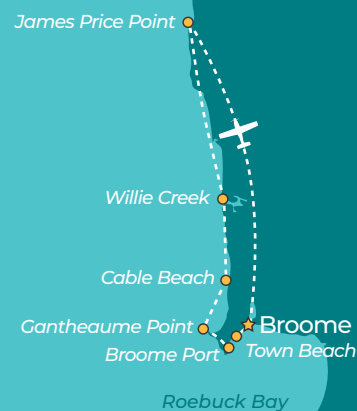
Fly the length of the Kimberley's world famous Cable Beach

Broome & Beaches
KL9 +
\$225 3-5 pax | 2 pax \$310pp

AVAILABLE: All year round

DURATION: Flight Time 45 minutes

WHAT TO BRING: Sun smart items



James Price Point | Cable Beach | Town Beach | Willie Creek | Roebuck Bay | Gantheaume Point

Flight Details

A 45 minute scenic flight over Broome township and beaches. See the local sights from a unique vantage point! See Cable Beach, Town Beach, Willie Creek, James Price Point, Roebuck Bay, Gantheaume Point and Broome Port.

Echidna Chasm, Purnululu National Park

Overnight *Adventure* Safaris



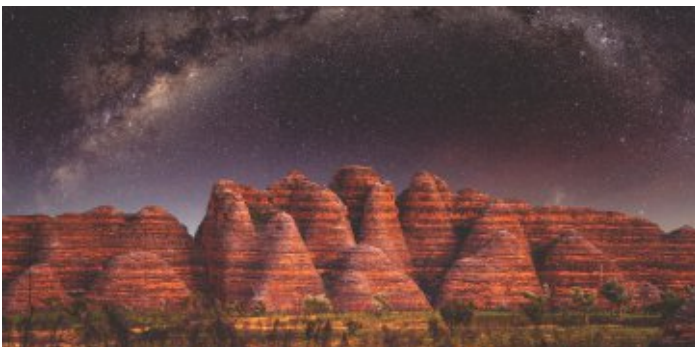
Waterfall Reef



Cygnets Bay Pearl Farm

Amazing experiences on an Overnight Safari

Experience the ever changing colours of Australia's Northwest on an Overnight Adventure Safari. Watch the sunset over the Bungle Bungles or experience massive tides turn as a coral reef rises out of the ocean.



KL40

Bungle Bungle
Adventure Safari

Purnululu | Cathedral Gorge
Echidna Chasm | Dome Walk
Mini Palm Gorge
Wunaamin Miliwundi Ranges



KL60

Cygnets Bay
Adventure Safari

Horizontal Falls
Buccaneer Archipelago
Ardyloon Hatchery
Cygnets Bay Pearl Farm
Borrgoron Coast to Creek Tour

KINGFISHER TOURS
sustainable tourism

CYGNETS BAY
PEARL FARM

BORRGORON
COAST TO CREEK TOURS

ARDYALOON
HATCHERY

Visit airkimberley.com.au for more information on our Overnight Adventure Safaris.

"A must do experience when in Broome. The whole trip was very well organised, and the whole crew makes sure you have a great time, especially our pilot Blake. You have unforgettable views from the plane to Horizontal falls and rest of the scenery around Broome, that you just cannot get unless you are in the air. You are provided with water, barramundi for lunch, and snacks/ginger beer on the flight back to Broome. Once you land, they know you are all hot and tired, and the crew is waiting with a smile, wet towel and some ice tea. Sending you off with a complimentary picture from the day."

Karin S | March 2023

"Fabulous day looked after by Air Kimberley with a window seat, beautiful coastal views, horizontal falls (they looped left then right to make sure you got a good view) insightful commentary, delightful and timely drinks, meals, lovely surprise of a photo to take away and drinks at Matso! friendly staff and pilots we had a fabulous day and learnt so much about the pearling industry and history of Broome, we highly recommend this tour."

Liz C | March 2023

"We had an excellent time on the Buccaneer Explorer Tour! Our pilot was knowledgeable & friendly and the experience itself was amazing! There were a group of 6 of us who went together (aged 81 to 5) and everyone had a wonderful time. It was a lovely touch to have a nice cold drink for the trip back & to return back to base to an ice cold washer & another refreshing drink - it was a very hot day, so we definitely needed it! Would 100% recommend!"

Carolyn L | April 2023

Anywhere in the Kimberley

**We'll fly
you there.**



"We had an amazing day of air and land touring thanks to Air Kimberley . This is the second flight we have done through this company which itself speaks volumes ! No wonder they have been the recipients of multiple tourism awards. Apart from the wonderful skills of Jack our pilot (2 superbly smooth landings, & so knowledgeable and engaging.... great communication skills) there were the extra details like bottles of cold ginger beer on our way home , cold refreshing towels and iced tea on landing AND a complementary photo of us to take home. This company has it all people !!!"

Sharon T | March 2023

"Fantastic trip out. The views were amazing. Chris, the pilot, did an excellent job telling us about the places we were flying over. I'd definitely recommend this company to give you an amazing and unforgettable day out."

Maureen | March 2023

"A bucket list must do experience - spectacular views, great Barra lunch, fantastic experiences pilot with engaging commentary. All of the staff were wonderful from the drivers to the reception. Great company will fly again some day."

Cameron T | February 2023



Scan for more reviews



airkimberley.com.au

Remote Aviation Charter Specialist.



Air Kimberley have been providing reliable and competitive aviation services to the corporate, mining and government sectors for more than 30 years. We specialise in freight services to remote Kimberley locations and regularly fly to destinations not serviced by mainstream logistics companies. Air Kimberley are remote charter specialists, delivering safe, efficient on-time performance with a high level of customer service and satisfaction.



AIR KIMBERLEY

— Flying Australia's Northwest —



Corporate & Government

Air Kimberley provides Corporate and Government air charter throughout Australia's Northwest. With safety, reliability and flexibility being our highest priorities, Air Kimberley offers safe, convenient and professional corporate air services with exceptional customer service.



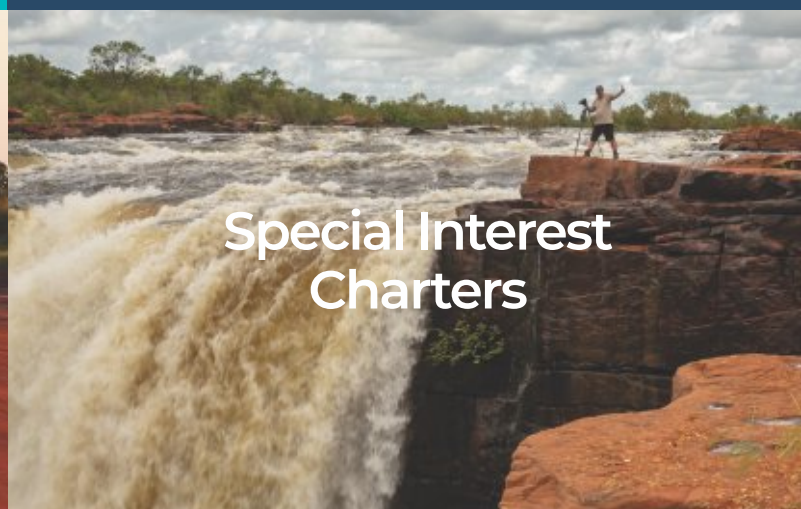
Mining & Resources

Air Kimberley provides air charter services and support to remote mine sites throughout the Kimberley and Pilbara. We specialise in small scale crew changes and the service and supply of essential goods and urgent freight. Air Kimberley has the capabilities to provide charter requirements at short notice with a very high standard of customer satisfaction.



Remote Communities

There are over 270 remote Aboriginal communities in Western Australia with 244 of them located in the Kimberley and Pilbara regions. Air Kimberley fly to and work in partnership with many of these communities, delivering essential supplies and services to these remote populations.



Special Interest Charters

Photographic tours, bird watching and rock art expeditions. Air Kimberley can customise tour packages to suit a range of interest groups. We can take care of everything from co-ordinating access to remote locations and communities, organising ground transfers and any catering requirements.



Freight Services to Remote Locations

We specialise in freight to remote Kimberley locations. We regularly fly to destinations not serviced by mainstream logistics companies. We can organise and plan flight arrangements to best suit your specific budget and resources, offering greater flexibility than a regular scheduled airline.



On Country Aboriginal Tours & Safaris

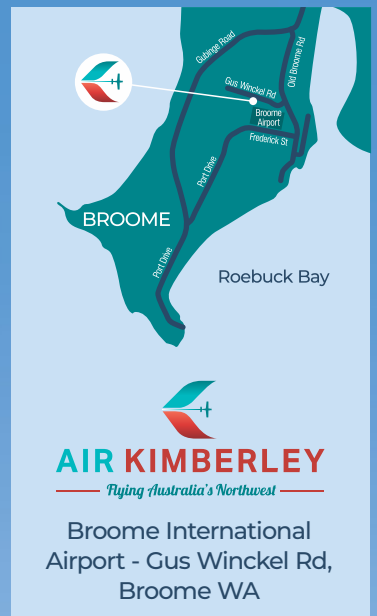
We partner with a number of Aboriginal tour operators in the Kimberley who offer authentic On Country experiences, often starting from remote Kimberley locations. We can help you customise a tour specific to your group's interests and then connect you with an experienced Aboriginal guide.


Welcome to Air Kimberley!

Based in Broome, Air Kimberley operates remote air services and unforgettable scenic adventure flights exploring Australia's Northwest. Air Kimberley has been flying the skies of Western Australia for 30 years. At Air Kimberley, we are passionate about Aviation, Sustainable Tourism and supporting our Indigenous tour partners and local communities. Our passion is to connect people to the Kimberley through unforgettable experiences, to increase cultural awareness and to promote sustainable tourism.

Experienced pilots are additionally trained as tour guides and provide a comprehensive and informative insight into the stunning Kimberley landscape. Each passenger has a window seat and a personal headset to listen to the pilot's commentary. Pilots circle landmarks of interest throughout the tours to ensure maximum photo opportunities!

At Air Kimberley, we have the expertise and local knowledge to provide valuable assistance in charter requirements, itinerary and tour planning throughout the Kimberley and Australia's Northwest.



Follow us  @AirKimberley  @AirKimberley | #FlyTheKimberley | #FlyingAustraliasNorthwest
fly@airkimberley.com.au | www.airkimberley.com.au



Direct Bookings Call 08 9193 7155

Children & Concessions

Family prices available | Children \$100 off full adult price | Concession \$30 off full adult price

Terms & Conditions – Full payment is required at time of booking to confirm your tour. Tours and rates are based on a minimum of 4 passengers and subject to availability and/or flight loads at the time of booking. Children are classified as 3-12 years of age. Infants are classified as 0-2 years of age and may be carried free of charge on the lap of a parent - maximum weight limit of 120kg per passenger. We observe a baggage allowance of 5kg per person. You must clearly communicate any special dietary requirements or food allergies at time of booking. Air Kimberley reserves the right to amend or cancel flight itineraries/flight routes due to weather and/or unforeseen circumstances.

Cancellation Policy – No refund will apply for cancellations within 48 hours of the tour departure. 3-7 days prior to departure will incur a 50% cancellation fee.

